



GAT MONTHLY MEMBERSHIP PROGRESS REPORT

Results as of: 5/31/2022

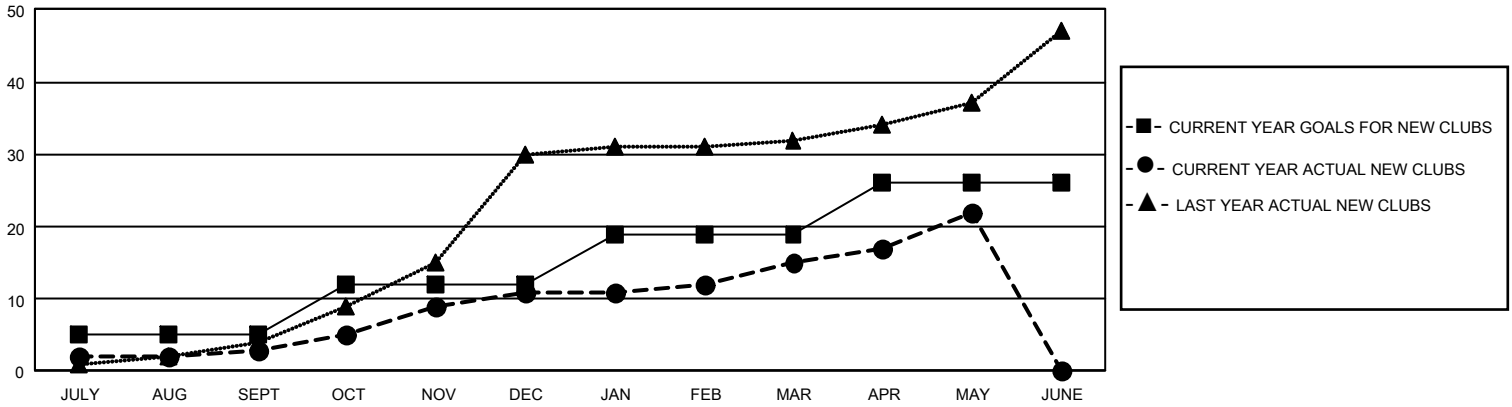
GMT Constitutional Area 3, Group E

REPORT DOES NOT INCLUDE CLUBS IN UNDISTRICTED AREAS.

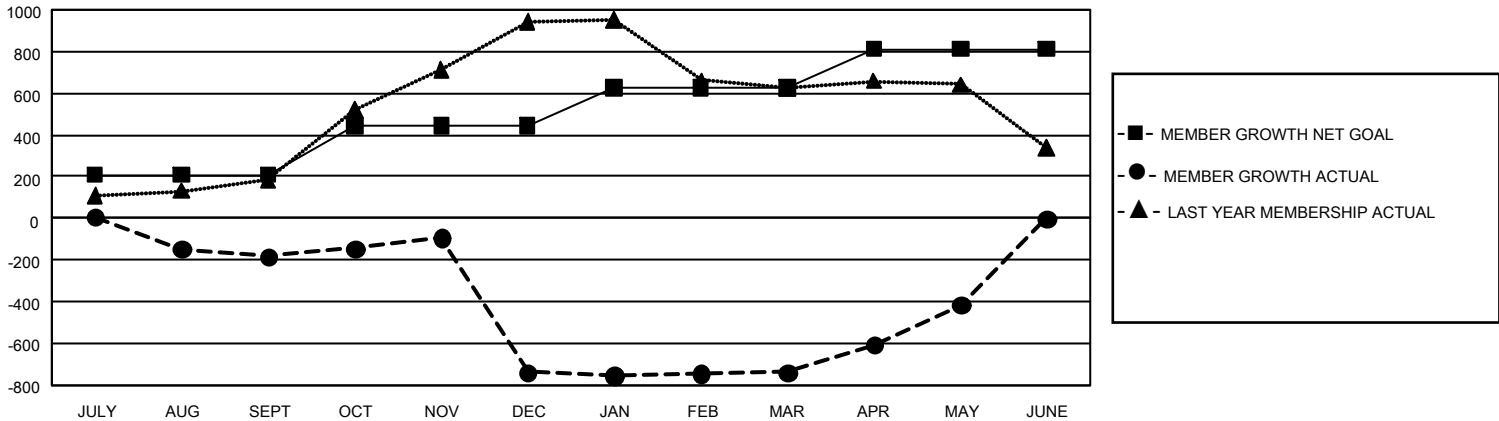
Clubs			
RESULTS FOR 2021-2022			
QUARTER	NEW CLUB GOAL	NEW CLUBS	DROPPED CLUBS
JULY/AUG/SEPT	15	3	20
OCT/NOV/DEC	21	8	14
JAN/FEB/MAR	21	4	6
APR/MAY/JUNE	21	7	0

Members			
RESULTS FOR 2021-2022			
QUARTER	MEMBER GROWTH NET GOAL	MEMBER GROWTH ACTUAL	DROPPED MEMBERS ACTUAL (including transfers)
JULY/AUG/SEPT	209	326	488
OCT/NOV/DEC	234	552	1,057
JAN/FEB/MAR	185	349	269
APR/MAY/JUNE	183	502	142

GOALS AND ACTUAL NEW CLUBS CUMULATIVE



GOALS AND ACTUAL MEMBERS CUMULATIVE



DROPPED CLUBS: 40	212 CLUBS OF 388 ADDED 1 OR MORE NEW MEMBERS	<u>GENDER DISTRIBUTION</u>	
<u>DROPPED MEMBERS</u>		MALE	3,737 (45.22%)
DECEASED	57	FEMALE	4,526 (54.77%)
CLUB CANCELLED	542	NON BINARY	0 (0.00%)
OTHER	1,357	PREFER NOT TO ANSWER	1 (0.01%)
TOTAL	1,956	TOTAL FAMILY UNIT MEMBERS	3,093
	CLICK HERE FOR CUMULATIVE MEMBERSHIP DATA	FAMILY MEMBERS PAYING HALF DUES	1,835